

# WELDCO HYDRA-LIFT

## Hydra-lift

# WHL40TC97 (new WHL6410-97)

The Weldco WHL40TC97 (new WHL6410-97) offers a four-section 97 foot fully proportional boom. The tapered rear sub frame is compatible with a fifth wheel installation, allowing the operator the ability to haul material directly to and from the job-site. A comfortable and fully equipped operator swing-cab is standard equipment.

### Features:

- 64,000 lbs at 10' radius (40-ton lifting capacity)
- 105' tip height (fully extended)
- 4 section 97' fully proportional boom
- 30' retracted length
- Continuous rotation
- 15,000 lb, 2 speed grooved drum planetary winch
- Tapered rear subframe for fifth wheel installation
- Out and down outriggers
- Oil cooler

### Benefits:

- High strength box construction, welded booms for maximum strength to weight ratio
- Planetary type winch with integral brake for high efficiency and security

### Optional Equipment:

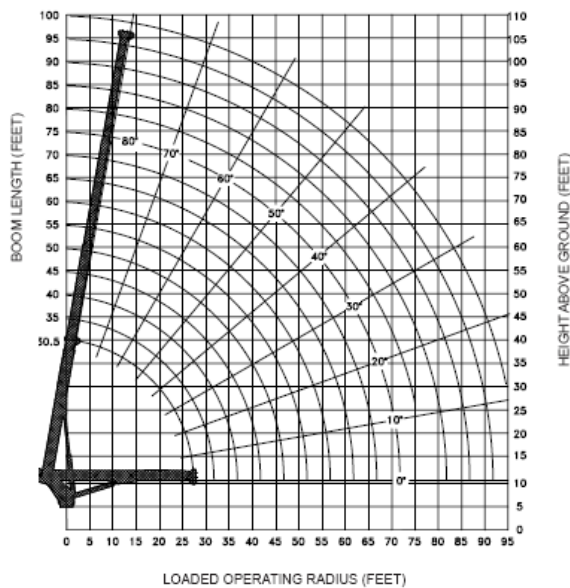
- Fixed swing around jib, stows along side of boom
- Snatch block and crane blocks for multi-part line operation
- Hydraulic tank heater
- Digital radio weight indicator
- Boom lights


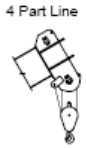
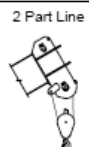





# FEATURES AND SPECIFICATIONS

MAXIMUM RATED LOAD IN LBS. WITH OUTRIGGERS FULLY EXTENDED												
Loaded Operating Radius	Loaded Boom Angle	Retracted Boom Length	Loaded Boom Angle	Boom Length	Loaded Boom Angle	Boom Length	Loaded Boom Angle	Boom Length	Loaded Boom Angle	Boom Length	Loaded Boom Angle	Extended Boom Length
ft	°	30ft 2in	°	45 ft	°	60 ft	°	75 ft	°	90 ft	°	96ft 11in
10	65	63,500	73	45,000	78	38,000						
12	60	56,000	71	44,500	76	35,000	78	29,000				
15	54	45,600	66	40,300	73	32,000	76	27,000	78	21,000	78	20,000
20	40	32,300	89	32,800	68	27,000	72	23,000	76	19,000	76	18,000
25	21	24,350	52	25,600	62	24,000	68	18,000	72	17,000	73	15,000
30			43	20,100	56	19,500	64	16,000	69	15,000	70	13,500
35			32	16,100	51	14,785	59	13,000	65	12,000	67	12,000
40			16	13,200	44	11,770	55	11,000	62	11,000	64	10,000
45					37	9,700	50	9,000	58	9,000	60	8,900
50					28	8,200	45	7,600	54	7,200	57	7,000
55					14	7,000	39	6,200	50	6,000	53	6,000
60							33	5,500	46	5,200	49	5,000
65							24	4,800	41	4,500	45	4,300
70									36	3,900	41	3,700
75									30	3,400	36	3,200
80									23	2,900	31	2,800
85											25	2,400
90											17	1,700

**NOTE:** Ratings above the heavy line are based on structural competence and not machine stability. Deductions must be made from rated loads for lifting accessories: overhaul balls, load hooks, snatch blocks and load blocks.



Maximum Loads 5/8" Cable	
1 Part Line  9,000 lbs	4 Part Line  36,000 lbs
2 Part Line  18,000 lbs	6 Part Line  45,000 lbs
3 Part Line  27,000 lbs	6 Part Line  54,000 lbs