

WELDCO HYDRA-LIFT

Hydra-lift

WHL23TC100 (new WHL2910-100)

The WHL23TC100 (new WHL2910-100) offers a long boom length that provides a distinct advantage on today's modern construction site. The 4-stage dual crowd boom only uses a single cylinder mounted inside the boom.

Feature:

- 46,000 lb lifting capacity
- 110' sheave height
- 12,000 lb planetary winch
- Optional continuous rotation
- External drive swing box with eccentric ring backlash adjustment
- Load moment indicator (LMI) and shutdown system available



Benefits:

- Two speed winch motor can easily change between high and low speed for precise control and job efficiency
- Large gear teeth prevent gear tooth breakage
- External mount provides easy and instant servcability for maintenance and adjustment
- Digital wireless weight indicator is available to inform the operator what the load is
- LMI can be added and wired directly to the shut down valve to prevent overloading of the crane

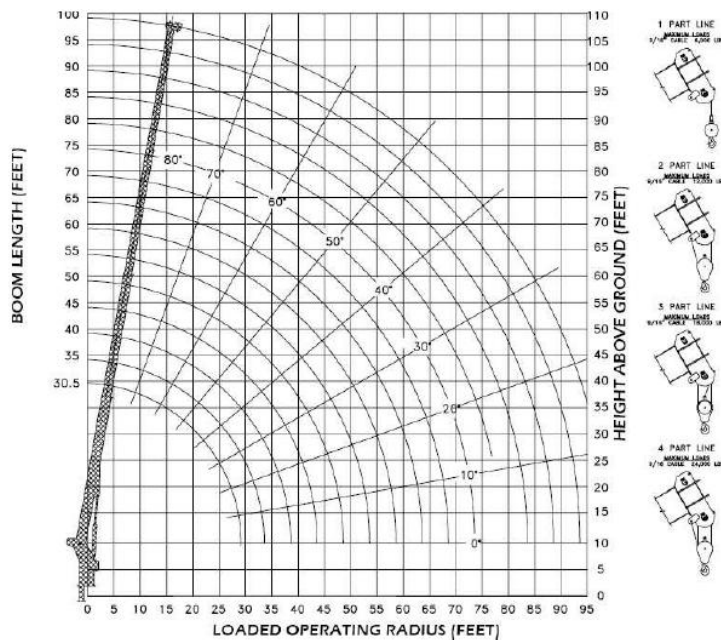
FEATURES AND SPECIFICATIONS

LOADED OPERATING RADIUS (FEET)

| MAXIMUM RATED LOAD IN LBS. WITH OUTRIGGERS FULLY EXTENDED | | | | | | | | | | | | | |
|---|-------------------|-----------------------|-------------------|-------------|-------------------|-------------|-------------------|-------------|-------------------|-------------|-------------------|----------------------|-------|
| LOADED OPERATING RADIUS | LOADED BOOM ANGLE | RETRACTED BOOM LENGTH | LOADED BOOM ANGLE | BOOM LENGTH | LOADED BOOM ANGLE | BOOM LENGTH | LOADED BOOM ANGLE | BOOM LENGTH | LOADED BOOM ANGLE | BOOM LENGTH | LOADED BOOM ANGLE | EXTENDED BOOM LENGTH | |
| FEET | < | 30' | < | 45 ft | < | 60 ft | < | 75 ft | < | 90 FT | < | 100 ft | |
| 5 | 80 | 46,000 | | | | | | | | | | | |
| 8 | 74 | 33,500 | 80 | 24,000 | | | | | | | | | |
| 10 | 70 | 28,200 | 77 | 24,000 | | | | | | | | | |
| 12 | 66 | 24,500 | 74 | 23,500 | 78 | 16,000 | | | | | | | |
| 15 | 60 | 19,000 | 70 | 17,500 | 75 | 14,200 | 78 | 12,000 | | | | | |
| 20 | 47 | 13,750 | 63 | 15,500 | 70 | 13,000 | 74 | 10,000 | 77 | 7,800 | 78 | 7,300 | |
| 25 | 31 | 10,500 | 56 | 12,000 | 65 | 10,000 | 70 | 9,000 | 74 | 6,500 | 75 | 6,200 | |
| 30 | | | 48 | 9,300 | 60 | 8,500 | 66 | 8,000 | 70 | 6,000 | 73 | 5,700 | |
| 35 | | | 39 | 7,300 | 55 | 7,000 | 62 | 6,500 | 67 | 5,800 | 70 | 5,200 | |
| 40 | | | 26 | 5,800 | 48 | 5,800 | 58 | 5,200 | 64 | 5,000 | 67 | 4,700 | |
| 45 | | | | | 41 | 4,500 | 53 | 4,500 | 60 | 4,400 | 63 | 4,200 | |
| 50 | | | | | 33 | 3,500 | 48 | 3,500 | 56 | 3,500 | 60 | 3,500 | |
| 55 | | | | | 23 | 3,000 | 43 | 3,200 | 52 | 3,200 | 57 | 3,200 | |
| 60 | | | | | | | | 37 | 2,500 | 48 | 2,500 | 53 | 2,500 |
| 65 | | | | | | | | 30 | 2,100 | 44 | 2,200 | 50 | 2,200 |
| 70 | | | | | | | | 20 | 1,600 | 39 | 1,600 | 46 | 1,600 |
| 75 | | | | | | | | | | 33 | 1,200 | 41 | 1,200 |
| 80 | | | | | | | | | | 27 | 1,000 | 37 | 1,000 |
| 85 | | | | | | | | | | 18 | 600 | 32 | 600 |
| 90 | | | | | | | | | | | 25 | 400 | |

RATINGS ABOVE THE HEAVY LINE ARE BASE ON STRUCTURAL COMPETENCE AND NOT ON MACHINE STABILITY.

NOTE Deductions must be made from rated loads for lifting accessories: Fixed jibs, telescopic jibs, overhaul balls, load hooks, snatch blocks and load blocks.



**WELDCO HYDRA-LIFT
WHL23TC100 CAPACITY CHART**