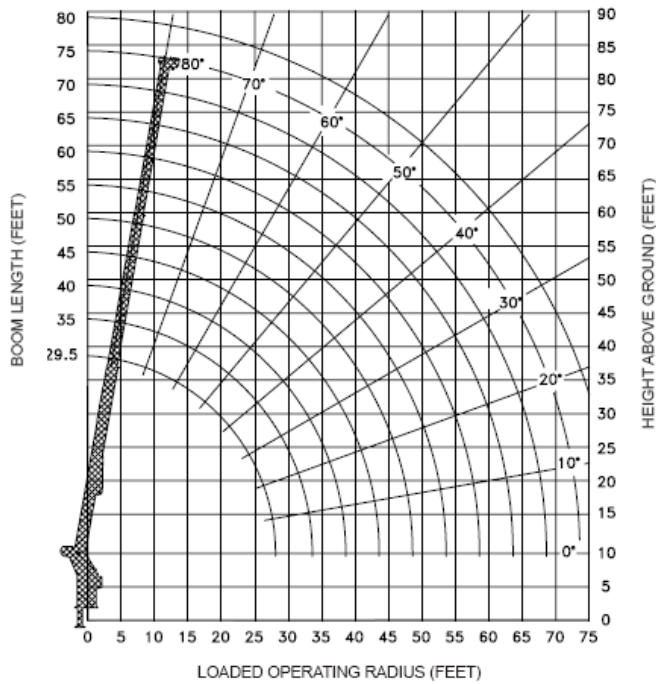


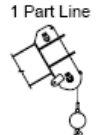
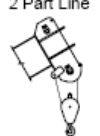
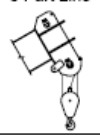
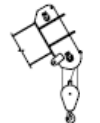
## LOAD CHARTS AND SPECIFICATIONS

MAXIMUM RATED LOAD IN LBS. WITH OUTRIGGERS FULLY EXTENDED													
LOADED OPERATING RADIUS	LOADED BOOM ANGLE	RETRACTED BOOM LENGTH	LOADED BOOM ANGLE	BOOM LENGTH	LOADED BOOM ANGLE	BOOM LENGTH	LOADED BOOM ANGLE	BOOM LENGTH	LOADED BOOM ANGLE	BOOM LENGTH	LOADED BOOM ANGLE	BOOM LENGTH	EXTENDED BOOM LENGTH
FEET	°	29' 6"	°	40 ft	°	50 ft	°	60 ft	°	70 ft	°	74' 6"	
10	70	30,000	76	24,000	79	24,000							
12	66	25,000	73	24,000	76	22,000	79	20,000					
15	59	22,000	68	22,000	73	19,000	76	17,500	78	16,000	78	15,000	
20	47	16,500	60	16,500	66	16,000	71	14,500	73	13,500	75	13,000	
25	30	13,000	51	13,000	60	12,000	65	11,000	69	10,500	70	10,000	
30			41	10,500	53	10,000	60	9,500	65	9,000	66	8,500	
35			27	8,500	45	8,000	54	7,500	60	7,500	62	7,000	
40					37	7,000	48	6,500	56	6,500	58	6,500	
45					25	5,500	42	5,500	50	5,400	53	5,300	
50							33	4,500	45	4,400	48	4,400	
55							23	3,700	38	3,600	43	3,600	
60									31	3,000	36	3,000	
65									21	2,500	29	2,500	
70											19	2,100	

RATINGS ABOVE THE HEAVY LINE ARE BASE ON STRUCTURAL COMPETENCE AND NOT ON MACHINE STABILITY.

**NOTE:** Deductions must be made from rated loads for lifting accessories: Fixed jibs, telescopic jibs, overhaul balls, load hooks, snatch blocks and load blocks.



Maximum Load (lbs) 3/16 Cable	
	6,000
	12,000
	18,000
	24,000