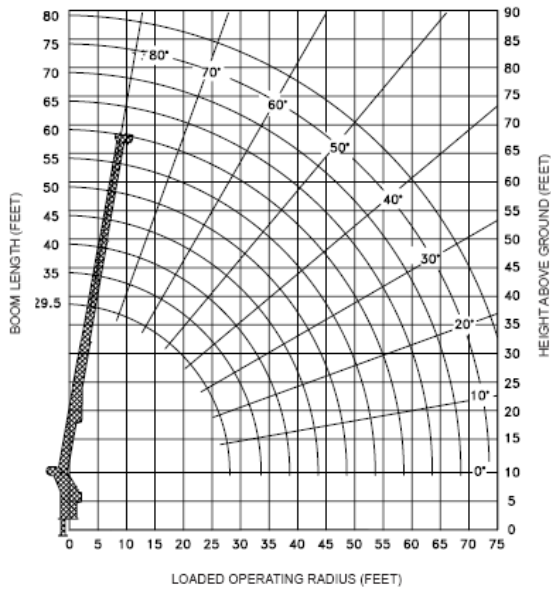




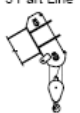
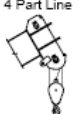
LOAD CHARTS AND SPECIFICATIONS

MAXIMUM RATED LOAD IN LBS. WITH OUTRIGGERS FULLY EXTENDED												
LOADED OPERATING RADIUS	LOADED BOOM ANGLE	RETRACTED BOOM LENGTH	LOADED BOOM ANGLE	BOOM LENGTH	LOADED BOOM ANGLE	BOOM LENGTH	LOADED BOOM ANGLE	BOOM LENGTH	LOADED BOOM ANGLE	BOOM LENGTH	LOADED BOOM ANGLE	BOOM LENGTH
FEET	°	24' 6"	°	35 ft	°	45 ft	°	55 ft	°	59' 6"		
10	66	30,000	74	24,000	77	22,000						
12	61	25,000	70	21,000	75	19,000	77	18,000				
15	52	20,000	65	18,000	71	16,000	74	15,000	75	14,000		
20	33	15,000	55	13,500	64	12,500	69	12,000	70	11,000		
25			44	11,000	56	10,000	63	9,500	65	9,000		
30			29	9,000	48	8,000	57	7,500	59	7,500		
35					38	6,500	50	6,500	53	6,500		
40					25	5,500	43	5,500	47	5,500		
45							34	4,500	40	4,500		
50							23	4,000	31	4,000		
55									20	3,500		

RATINGS ABOVE THE HEAVY LINE ARE BASE ON STRUCTURAL COMPETENCE. RATINGS BELOW THE HEAVY LINE ARE BASE ON MACHINE STABILITY AND DO NOT EXCEED 85% OF TIPPING.

NOTE: Deductions must be made from rated loads for lifting accessories: Fixed jibs, telescopic jibs, overhaul balls, load hooks, snatch blocks and load blocks.



Maximum Load (lbs) 9/18 Cable	
1 Part Line 	6,000
2 Part Line 	12,000
3 Part Line 	18,000
4 Part Line 	24,000