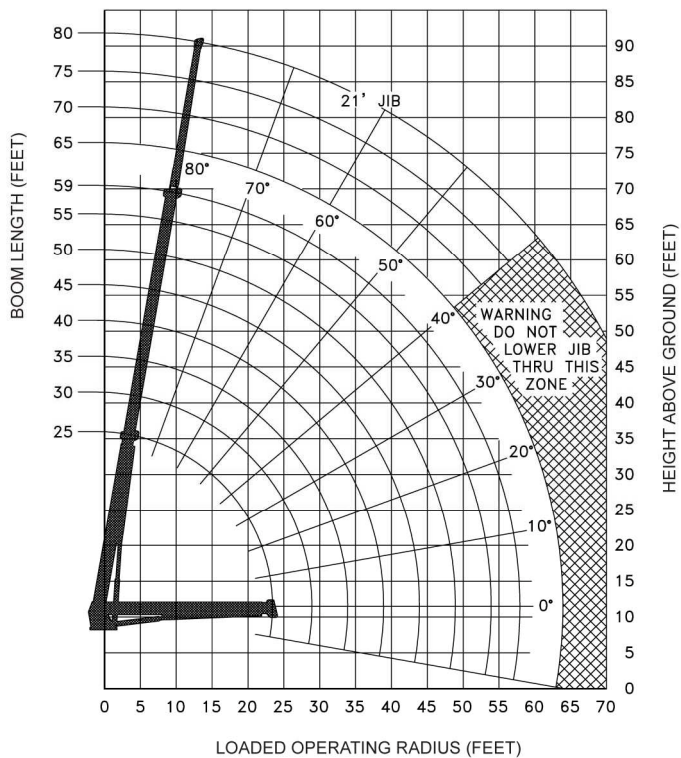



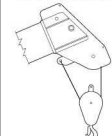
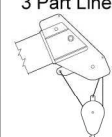

FEATURES AND SPECIFICATIONS

| MAXIMUM RATED LOAD IN LBS. WITH OUTRIGGERS FULLY EXTENDED | | | | | | | | | | | | | |
|---|------------------|-----------------------|-------------------|-------------|-------------------|-------------|-------------------|-------------|-------------------|-------------|-------------------|-------------|-------------------|
| Loaded Operating Radius | Loade Boom Angle | Retracted Boom Length | Loaded Boom Angle | Boom Length | Loaded Boom Angle | Boom Length | Loaded Boom Angle | Boom Length | Loaded Boom Angle | Boom Length | Loaded Boom Angle | Boom Length | 21 ft Jib Erected |
| ft | ° | 25 ft | ° | 35 ft | ° | 45 ft | ° | 55 ft | ° | 59 ft | ° | | |
| 10 | 67 | 36,500 | 74 | 34,500 | 78 | 33,000 | 80 | 32,000 | | | | | |
| 12 | 62 | 31,900 | 71 | 30,100 | 75 | 28,600 | 78 | 27,500 | 79 | 27,00 | | | |
| 14 | 56 | 28,500 | 67 | 26,500 | 73 | 25,400 | 76 | 24,300 | 77 | 24,100 | 80 | 6,650 | |
| 16 | 50 | 25,500 | 63 | 24,100 | 70 | 22,600 | 74 | 21,600 | 75 | 21,400 | 78 | 6,200 | |
| 18 | 44 | 23,000 | 59 | 21,800 | 67 | 20,400 | 71 | 19,400 | 73 | 19,200 | 76 | 5,900 | |
| 20 | 36 | 21,000 | 55 | 19,900 | 64 | 18,600 | 69 | 17,700 | 71 | 17,400 | 75 | 5,500 | |
| 25 | | | 44 | 16,600 | 57 | 15,500 | 63 | 14,700 | 66 | 14,500 | 70 | 4,700 | |
| 30 | | | 28 | 13,500 | 48 | 13,100 | 57 | 12,400 | 60 | 12,200 | 67 | 4,500 | |
| 35 | | | | | 38 | 11,200 | 51 | 10,700 | 54 | 10,500 | 63 | 4,200 | |
| 40 | | | | | 25 | 9,300 | 43 | 9,300 | 48 | 9,200 | 60 | 3,600 | |
| 45 | | | | | | | 35 | 8,300 | 41 | 8,300 | 55 | 3,100 | |
| 50 | | | | | | | 24 | 6,900 | 33 | 7,200 | 51 | 2,600 | |
| 55 | | | | | | | | | 21 | 6,000 | 45 | 2,200 | |
| 60 | | | | | | | | | | | 41 | 2,000 | |
| Deductions for stowed Jib | | 675 lbs | | 500 lbs | | 450 lbs | | 325 lbs | | 300 lbs | | | |

Ratings above the heavy line are based on structural competence and not machine stability.

NOTE: Deductions must be made from rated loads for lifting accessories: overhaul balls, load hooks, snatch blocks and load blocks.



| Maximum Load (lbs) | Cable Size (in) | |
|--|-----------------|--------|
| | 9/16 | 5/8 |
| 1 Part Line  | 7,500 | 8,700 |
| 2 Part Line  | 15,000 | 17,400 |
| 3 Part Line  | 22,500 | 26,100 |
| 4 Part Line  | 30,000 | 34,800 |